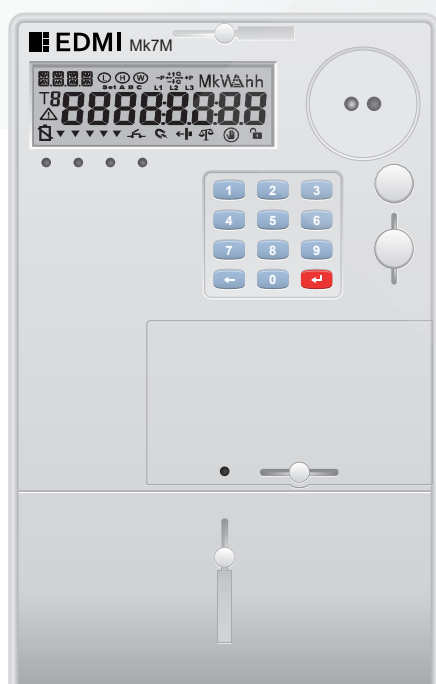




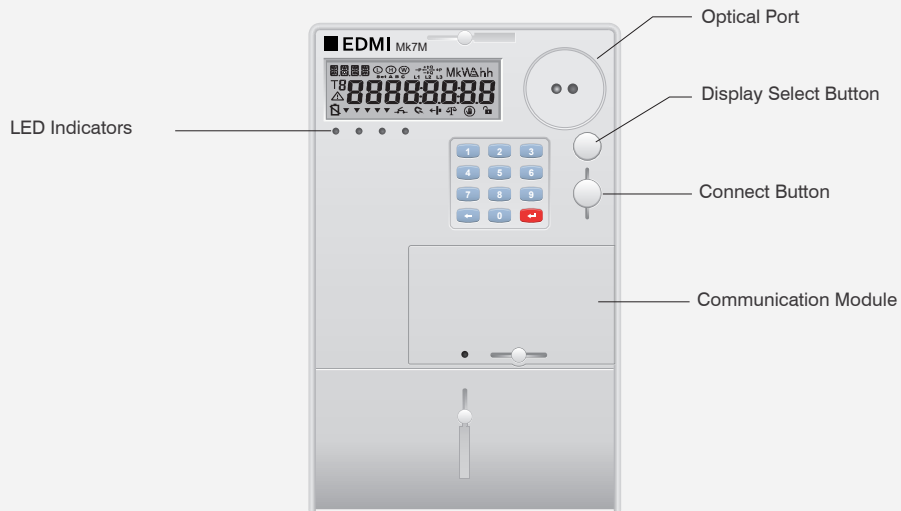
Mk7M

Smart Single Phase Meter

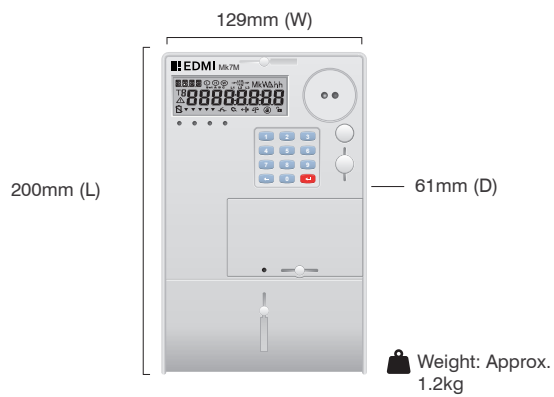


Mk7M

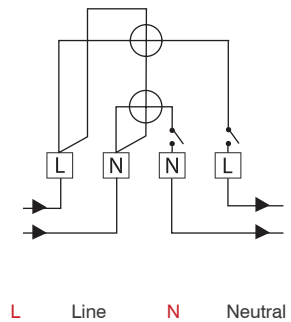
Meter Details



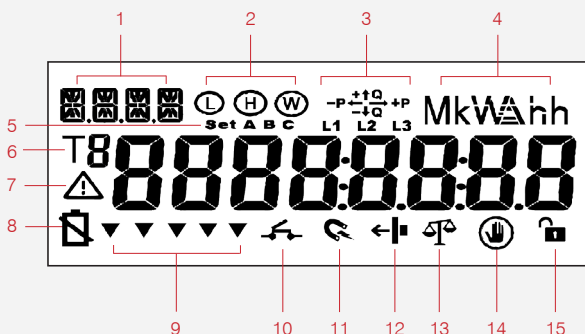
Dimensions



Terminal Configuration



LCD Display



- | | |
|-------------------------------------|---------------------|
| 1 Starburst Display | 9 Enunciators |
| 2 Communication Mode | 10 Relay Status |
| 3 Quadrant Indicator | 11 Magnetic Tamper |
| 4 K Multiplier with Display of Unit | 12 Reverse Current |
| 5 LCD Display Set | 13 Unbalanced Load |
| 6 Tariff Index | 14 Tamper Indicator |
| 7 Alarm Indicator | 15 Operation Mode |
| 8 Low Battery Indicator | |

Specifications



Standards and Compliance

IEC 62052-11

Electricity metering equipment (AC) - General requirements, tests and test conditions - Part 11: Metering equipment

IEC 62053-21

Electricity metering equipment (AC) - Particular requirements - Part 21 Static meters for active energy (classes 1 and 2)

IEC 62053-23

Electricity metering equipment (AC) - Particular requirements - Part 23 Static meters for reactive energy (classes 2 and 3)

IEC 62055-31

Payment systems - Particular requirements - Static payment meters for active energy (classes 1 and 2)

IEC 62055-41

Payment systems - Standard Transfer Specification - Application layer protocol for one-way token carrier system

IEC 62055-51

Payment systems - Standard Transfer Specification - Physical Layer Protocol for one-way numeric and magnetic card token carrier

Measurement	1 phase 2 wire (optional neutral current measurement)
Voltage	Nominal voltage (Un): 220V to 240V Operating range: 0.5Un to 1.2Un Impulse voltage: 6kV
Current	WC range: 5/100A WC limit: 30 times Imax for 0.5 cycles Phase current measurement sensor: Shunt Neutral current measurement sensor: CT
Terminal	Terminal cross-section: 70.85mm ²
Power Consumption	Voltage circuit: <10VA/phase, 2W @ Vn Current circuit: <2.5VA/phase @ In
Frequency	50Hz/60Hz
Inputs/Outputs Configuration	Up to 4 x LED indicators Up to 2 x outputs
Relay	Up to two internal disconnect relays (100A)
Battery	Internal lithium battery (3.6V) Internal super capacitor Backup time of 5 years without power (lithium battery) Backup time of 48 hours without power (super capacitor) Optional external replaceable battery
Data Memory	2MB of non-volatile memory
LCD Display	8 Character of eight-segment display (8.5mm x 5mm) Display available without mains power Option for backlight
Real-time Clock	Precision clock accuracy: <5ppm (15 seconds per month) at 23°C
Keypad	Option of silicone keypad

Measured Values	1 element 4 quadrant Import/Export/Absolute Wh, varh and VAh Per quadrant Wh, varh and VAh Power: W, var, VA, Vrms, Irms Power factor, frequency
------------------------	--

Load Survey/ Profile	Up to 8 channels and 2 independent surveys Intervals programmable from 1 to 60 minutes Energy, instantaneous readings pulsing inputs as channel sources Ability to store average/minimum/maximum values for interval duration
Time of Use	Up to 8 rates plus unified rate Up to 8 separate import and export registers Daily, weekly, monthly, yearly and special days Up to 48 previous periods plus period totals Block or rolling maximum demand Time of maximum demand
Calendar	Supports Daylight Saving time
Tamper Detection and Alarms	Provision for sealing with conventional wire or plastic seals Reverse current detection Line and neutral current unbalance detection Meter cover and terminal cover detection Faulty load relay detection Overload detection Magnetic tamper detection (option) Alarms are stored in event logs
Security	Multi-level security (username and password including encrypted log-in) Up to 10 independent security levels Up to 8 individual users
Operation Mode	Postpaid or Prepaid
Communications	3 Independent communication ports: Optical port: FLAG (IEC 62056-21) Built-in communication -RF: 300MHz to 950MHz (configurable) -DBPSK PLC Module: 187.5kHz -RS-485 screw terminal (2-wire) Pluggable communication module -GPRS/GSM (850/900/1800/1900 MHz) EDMI command line DLMS
Protocol	

Environmental	Specified operating range: -25°C to +60°C Operating range limit: -40°C to +70°C Storage range limit: -40°C to +80°C Relative humidity: Up to 75% mean, 95% non-condensing for 30 days Ingress protection: IP54 (without suction)
----------------------	--



HEADQUARTERS (SINGAPORE)

EDMI LIMITED

47 Yishun Industrial Park A, Singapore 768724

☎ (65) 6756 2938

✉ sales-singapore@edmi-meters.com

INDONESIA (JAKARTA)

PT EDM I INDONESIA

Rukan Tendean Square No. 8
Jl. Wolter Monginsidi 122-124
Jakarta 12170, Indonesia

☎ (62) 21 7278 0868

✉ sales-indonesia@edmi-meters.com

MALAYSIA (KUALA LUMPUR)

EDMI METERS SDN BHD

A-2M-01, Level 2M Block A, PJ8 No. 23
Jalan Barat Seksyen 8, 46050 Petaling Jaya,
Selangor, Darul Ehsan Malaysia

☎ (60) 3 7958 6318

✉ sales-malaysia@edmi-meters.com

PHILIPPINES (MANILA)

EDMI PHILIPPINES INC

2/F Mirax Building
2270 Chino Roces Avenue Extension
Makati City 1231, Philippines

☎ (63) 2 757 1217 to 19

✉ sales-philippines@edmi-meters.com

INDIA (CHENNAI)

EDMI INDIA PVT. LTD.

(formerly Wallaby Metering Systems
Pvt Ltd.)
M-3, 9th Street
Dr. VSI Estate, Thiruvanniyur
600041 Chennai, India

☎ (91) 44 4225 1600

✉ sales-india@edmi-meters.com

CHINA (SHENZHEN)

EDMI (SHENZHEN) CO, LTD

Floor 5, Building 5
Zhong Yuntai Industrial Park
Tang Tou 1st Road, Shi Yan
Bao An, Shenzhen
GuangDong 518108, P.R. China

☎ (86) 755 2675 5788

✉ sales-chinaSZ@edmi-meters.com

CHINA (SHANGHAI)

EDMI INTERNATIONAL TRADING (SHANGHAI) CO, LTD

Room 1111, Tower A
Cao He Jing High Tech Building
900 Yishan Road
Shanghai 200233, P.R. China

☎ (86) 21 5423 4452

✉ sales-chinaSH@edmi-meters.com

JAPAN (TOKYO)

EDMI JAPAN CO, LTD

2-1-10 Higashi-Gotanda
Shinagawa-ku, Tokyo
141-0022, Japan

☎ (81) 3 3445 2033

✉ sales-japan@edmi-meters.com

VIETNAM (HO CHI MINH)

EDMI VIETNAM CO LTD

Floor No. 10, 137 Le Quang Dinh Street,
Binh Thanh District,
Ho Chi Minh City, Vietnam

☎ (84) 8 6258 3383

✉ sales-vietnam@edmi-meters.com

THAILAND (BANGKOK)

EDMI (THAILAND) LIMITED

61/1 Pattanakarn Road,
Soi 54 Suan Luang
Bangkok 10250, Thailand

☎ (66) 2 320 0462

✉ sales-thailand@edmi-meters.com

AUSTRALIA (BRISBANE)

EDMI PTY LTD

Level 7, 51 Alfred Street
Fortitude Valley, Queensland
Australia 4006

☎ (61) 7 3881 6466

✉ sales-australia@edmi-meters.com

AUSTRALIA (MELBOURNE)

EDMI GAS PTY LTD

7 Fowler Road
Dandenong South, Victoria
3175, Australia

☎ (61) 3 9794 6000

✉ gassales-australia@edmi-meters.com

NEW ZEALAND (WELLINGTON)

EDMI NZ LTD

Level 1, 181 Wakefield St
Wellington 6011
New Zealand

☎ (64) 4 801 4700

✉ sales-newzealand@edmi-meters.com

UNITED KINGDOM (NEWCASTLE)

EDMI EUROPE LIMITED

Northumberland House
1 Gosforth Park Avenue, Gosforth Business
Park, Newcastle upon Tyne
NE12 8EG, United Kingdom

☎ (44) 191 580 5172

✉ sales-europe@edmi-meters.com

COLOMBIA (BOGOTA)

EDMI LATIN AMERICA SAS

Carrera 13 No. 96-67 Edificio
Akori Oficina 207,
Bogota, Colombia

☎ (57) 1 601 8960

✉ sales-america@edmi-meters.com

